

Introduction to AlpsNMR (older API)

AlpsNMR authors

2023-02-16

Abstract

An introduction to the AlpsNMR package, showing the most relevant functions and a proposed workflow, using the older workflow.

Package

AlpsNMR 4.0.4

Contents

1	Enable parallelization	3
2	Data: The <code>MeOH_plasma_extraction</code> dataset	3
3	Loading samples	4
4	Adding metadata	5
5	Interpolation	6
6	Plotting samples	6
6.1	Creating interactive plots	7
7	Exclude regions.	7
8	Filter samples.	8
9	Robust PCA for outlier detection	8
10	Baseline removal	9
11	Peak detection	10
12	Spectra alignment	11
13	Normalization	12
14	Peak integration.	13
14.1	1. Integration based on peak center and width.	13
14.2	2. Integration based on peak boundaries	21

Introduction to AlpsNMR (older API)

15	Identification.	23
16	Final thoughts.	23

Introduction to AlpsNMR (older API)

The AlpsNMR package was written with two purposes in mind:

- to help **data analysts and NMR scientists** to work with NMR samples.
- to help **IT pipeline builders** implement automated methods for preprocessing.

Functions from this package written for data analysts and NMR scientists are prefixed with `nmr_`, while higher level functions written for IT pipeline builders are prefixed with `pipe_`. The main reason why all exported functions have a prefix is to make it easy for the user to discover the functions from the package. By typing `nmr_` RStudio will return the list of exported functions. In the R terminal, `nmr_` followed by the tab key (`<tab>`) twice will have the same effect. Other popular packages, follow similar approaches (e.g: `forcats`: `fct_*`, `stringr`: `str_*`).

This vignette is written for the first group. It assumes some prior basic knowledge of NMR and data analysis, as well as some basic R programming. In case you are interested in building pipelines with this package, you may want to open the file saved in this directory (run it on your computer):

```
pipeline_example <- system.file("pipeline-rmd", "pipeline_example.R", package = "AlpsNMR")
pipeline_example
```

```
library(BiocParallel)
library(AlpsNMR)
library(ggplot2)
```

1 Enable parallelization

This package is able to parallelize several functions through the use of the `BiocParallel` package. Whether to parallelize or not is left to the user that can control the parallelization registering backends. Please check the `BiocParallel` introduction for further details

```
library(BiocParallel)
#register(SerialParam(), default = TRUE) # disable parallelization
register(SnowParam(workers = 3, exportglobals = FALSE), default = TRUE) # enable parallelization with 4 workers
```

2 Data: The MeOH_plasma_extraction dataset

To explore the basics of the AlpsNMR package, we have included four NMR samples acquired in a 600 MHz Bruker instrument bundled with the package. The samples are pooled quality control plasma samples, that were extracted with methanol, and therefore only contain small molecules.

If you have installed this package, you can obtain the directory where the four samples are with the command

```
MeOH_plasma_extraction_dir <- system.file("dataset-demo", package = "AlpsNMR")
MeOH_plasma_extraction_dir
#> [1] "/tmp/RtmpnZnrsX/Rinst1f8beb56af9067/AlpsNMR/dataset-demo"
```

The demo directory includes four samples (zipped) and a dummy Excel metadata file.

Introduction to AlpsNMR (older API)

```
fs::dir_ls(MeOH_plasma_extraction_dir)
#> /tmp/RtmpnZnrsX/Rinst1f8beb56af9067/AlpsNMR/dataset-demo/10.zip
#> /tmp/RtmpnZnrsX/Rinst1f8beb56af9067/AlpsNMR/dataset-demo/20.zip
#> /tmp/RtmpnZnrsX/Rinst1f8beb56af9067/AlpsNMR/dataset-demo/30.zip
#> /tmp/RtmpnZnrsX/Rinst1f8beb56af9067/AlpsNMR/dataset-demo/README.txt
#> /tmp/RtmpnZnrsX/Rinst1f8beb56af9067/AlpsNMR/dataset-demo/dummy_metadata.xlsx
```

Given the name of the dataset, one may guess that the dataset was used to check the Methanol extraction in serum samples. The dummy metadata consists of dummy information, just for the sake of showing how this package can integrate external metadata. The excel file consists of two tidy tables, in two sheets.

```
MeOH_plasma_extraction_xlsx <- file.path(MeOH_plasma_extraction_dir, "dummy_metadata.xlsx")
exp_subj_id <- readxl::read_excel(MeOH_plasma_extraction_xlsx, sheet = 1)
subj_id_age <- readxl::read_excel(MeOH_plasma_extraction_xlsx, sheet = 2)
exp_subj_id
#> # A tibble: 3 x 3
#>   NMRExperiment SubjectID TimePoint
#>   <chr>         <chr>      <chr>
#> 1 10            Ana        baseline
#> 2 20            Ana        3 months
#> 3 30            Elia        baseline
subj_id_age
#> # A tibble: 2 x 2
#>   SubjectID Age
#>   <chr>     <dbl>
#> 1 Ana       29
#> 2 Elia      0
```

3 Loading samples

The function to read samples is called `nmr_read_samples`. It expects a character vector with the samples to load that can be paths to directories of Bruker format samples or paths to JDX files.

Additionally, this function can filter by pulse sequences (e.g. load only NOESY samples) or loading only metadata.

```
zip_files <- fs::dir_ls(MeOH_plasma_extraction_dir, glob = "*.zip")
zip_files
#> /tmp/RtmpnZnrsX/Rinst1f8beb56af9067/AlpsNMR/dataset-demo/10.zip
#> /tmp/RtmpnZnrsX/Rinst1f8beb56af9067/AlpsNMR/dataset-demo/20.zip
#> /tmp/RtmpnZnrsX/Rinst1f8beb56af9067/AlpsNMR/dataset-demo/30.zip
dataset <- nmr_read_samples(sample_names = zip_files)
dataset
#> An nmr_dataset (3 samples)
```

As we have not added any metadata to this dataset, the only column we see is the `NMRExperiment`:

Introduction to AlpsNMR (older API)

```
nmr_meta_get(dataset, groups = "external")
#> # A tibble: 3 x 1
#>   NMRExperiment
#>   <chr>
#> 1 10
#> 2 20
#> 3 30
```

4 Adding metadata

Initially our dataset only has the `NMRExperiment` column:

```
nmr_meta_get(dataset, groups = "external")
#> # A tibble: 3 x 1
#>   NMRExperiment
#>   <chr>
#> 1 10
#> 2 20
#> 3 30
```

The `exp_subj_id` table we loaded links the `NMRExperiment` to the `SubjectID`.

As we already have the `NMRExperiment` column, we can use it as the merging column (note that both columns have the same column name to match the metadata such as group class, age, BMI...):

```
dataset <- nmr_meta_add(dataset, metadata = exp_subj_id, by = "NMRExperiment")
nmr_meta_get(dataset, groups = "external")
#> # A tibble: 3 x 3
#>   NMRExperiment SubjectID TimePoint
#>   <chr>          <chr>      <chr>
#> 1 10            Ana        baseline
#> 2 20            Ana        3 months
#> 3 30            Elia        baseline
```

If we have info from different files we can match them. For instance, now we have the `SubjectID` information so we can add the table that adds the `SubjectID` to the `Age`.

```
dataset <- nmr_meta_add(dataset, metadata = subj_id_age, by = "SubjectID")
nmr_meta_get(dataset, groups = "external")
#> # A tibble: 3 x 4
#>   NMRExperiment SubjectID TimePoint Age
#>   <chr>          <chr>      <chr>  <dbl>
#> 1 10            Ana        baseline 29
#> 2 20            Ana        3 months 29
#> 3 30            Elia        baseline  0
```

Now we have our metadata integrated in the dataset and we can make use of it in further data analysis steps.

5 Interpolation

1D NMR samples can be interpolated together, in order to arrange all the spectra into a matrix, with one row per sample. The main parameters we would need is the range of ppm values that we want to interpolate and the resolution.

We can see the ppm resolution by looking at the ppm axis of one sample:

```
ppm_res <- nmr_ppm_resolution(dataset)[[1]]
message("The ppm resolution is: ", format(ppm_res, digits = 2), " ppm")
#> The ppm resolution is: 0.00023 ppm
```

We can interpolate the dataset, obtaining an `nmr_dataset_1D` object:

```
dataset <- nmr_interpolate_1D(dataset, axis = c(min = -0.5, max = 10, by = 2.3E-4))
```

This operation changes the class of the object, as now the data is on a matrix. The dataset is now of class `nmr_dataset_1D`. The `axis` element is now a numeric vector and the `data_1r` element is a matrix.

6 Plotting samples

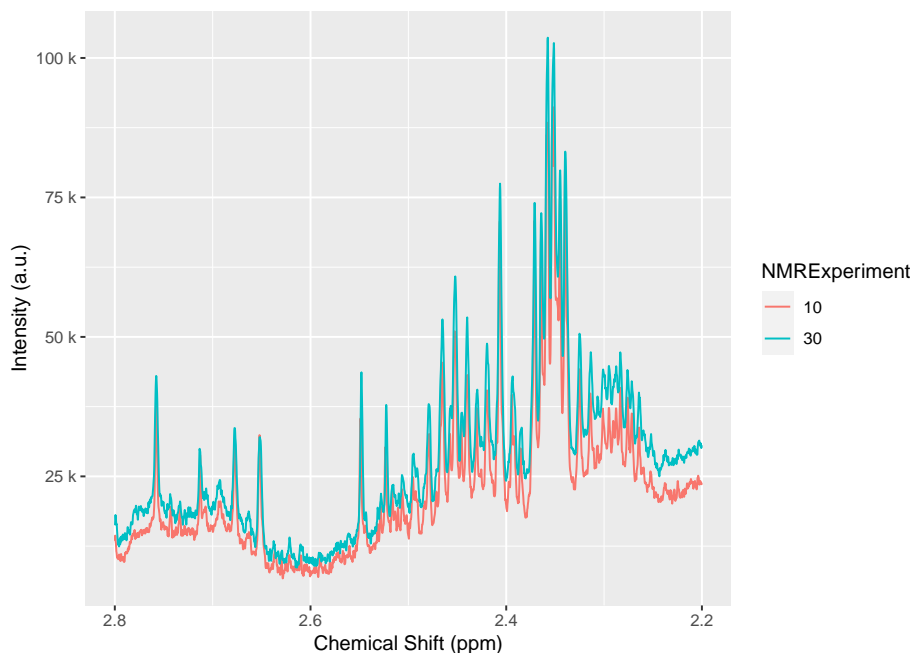
The AlpsNMR package offers the possibility to plot `nmr_dataset_1D` objects. Plotting many spectra with so many points is quite expensive so it is possible to include only some regions of the spectra or plot only some samples.

Use `?plot.nmr_dataset_1D` to check the parameters, among them:

- `NMRExperiment`: A character vector with the NMR experiments to plot
- `chemshift_range`: A ppm range to plot only a small region, or to reduce the resolution
- `interactive`: To make the plot interactive - `...:` Can be used to pass additional parameters such as `color = "SubjectID"` that are passed as aesthetics to ggplot.

```
plot(dataset, NMRExperiment = c("10", "30"), chemshift_range = c(2.2, 2.8))
```

Introduction to AlpsNMR (older API)



6.1 Creating interactive plots

The option `interactive = TRUE` described above has some performance limitations. As high performance workaround, you can make many plots interactive with the function `plot_interactive`.

This function will use WebGL technologies to create a webpage that, once opened, allows you to interact with the plot.

Due to technical limitations, these plots need to be opened manually and can't be embedded in RMarkdown documents. Therefore, the function saves the plot in the directory for further exploration. Additionally, some old web browsers may not be able to display these interactive plots correctly.

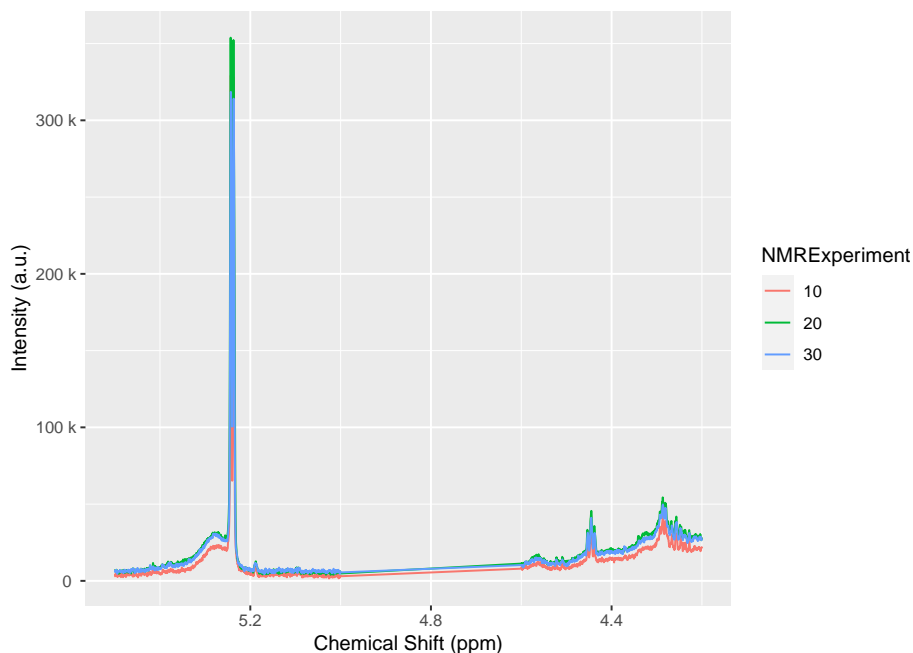
```
plt <- plot(dataset, NMRExperiment = c("10", "30"), chemshift_range = c(2.2, 2.8))
plot_interactive(plt, "plot_region.html")
```

7 Exclude regions

Some regions can easily be excluded from the spectra with `nmr_exclude_region`. Note that the regions are fully removed and not zeroed, as using zeros complicates a lot the implementation¹ and has little advantages.

```
regions_to_exclude <- list(water = c(4.6, 5), methanol = c(3.33, 3.39))
dataset <- nmr_exclude_region(dataset, exclude = regions_to_exclude)
plot(dataset, chemshift_range = c(4.2, 5.5))
```

¹e.g. it can inadvertently distort the PQN normalization results



8 Filter samples

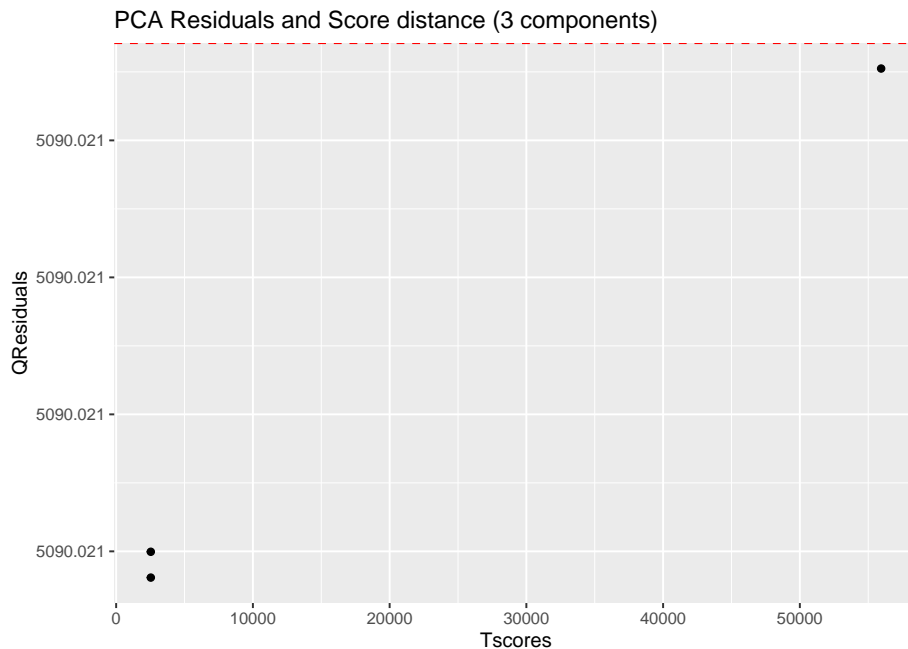
Maybe we just want to analyze a subset of the data, e.g., only a class group or a particular gender. We can filter some samples according to their metadata as follows:

```
samples_10_20 <- filter(dataset, SubjectID == "Ana")
nmr_meta_get(samples_10_20, groups = "external")
#> # A tibble: 2 x 4
#>   NMRExperiment SubjectID TimePoint  Age
#>   <chr>          <chr>    <chr>   <dbl>
#> 1 10             Ana      baseline 29
#> 2 20             Ana      3 months 29
```

9 Robust PCA for outlier detection

The AlpsNMR package includes robust PCA analysis for outlier detection. With such a small demo dataset, it is not practical to use, but check out the documentation of `nmr_pca_outliers_*` functions.

```
pca_outliers_rob <- nmr_pca_outliers_robust(dataset, ncomp = 3)
nmr_pca_outliers_plot(dataset, pca_outliers_rob)
```

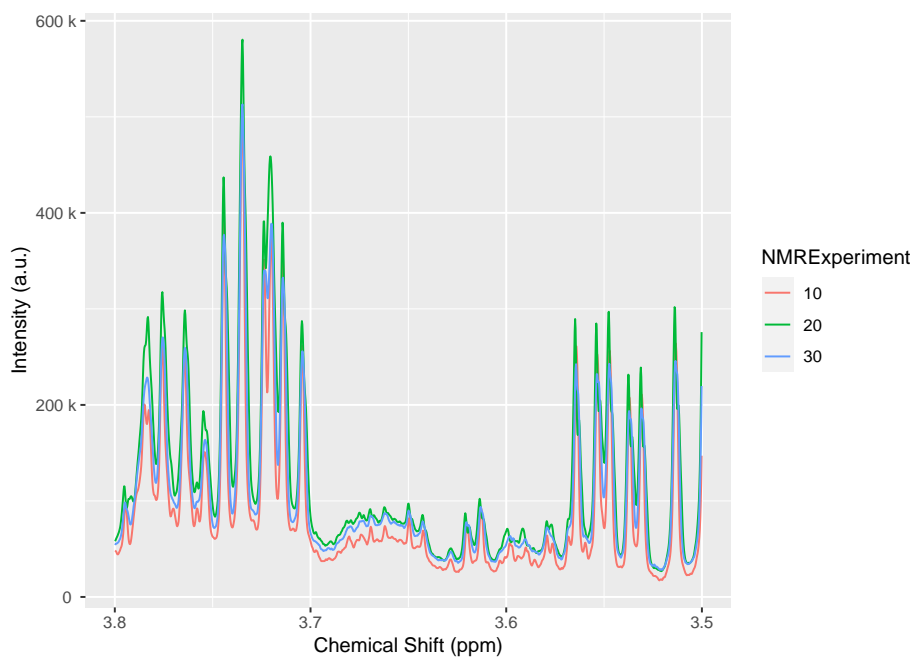



10 Baseline removal

Spectra may display an unstable baseline, specially when processing blood/fecal blood/fecal samples. If so, `nmr_baseline_removal` subtract the baseline by means of Asymmetric Least Squares method.

See before:

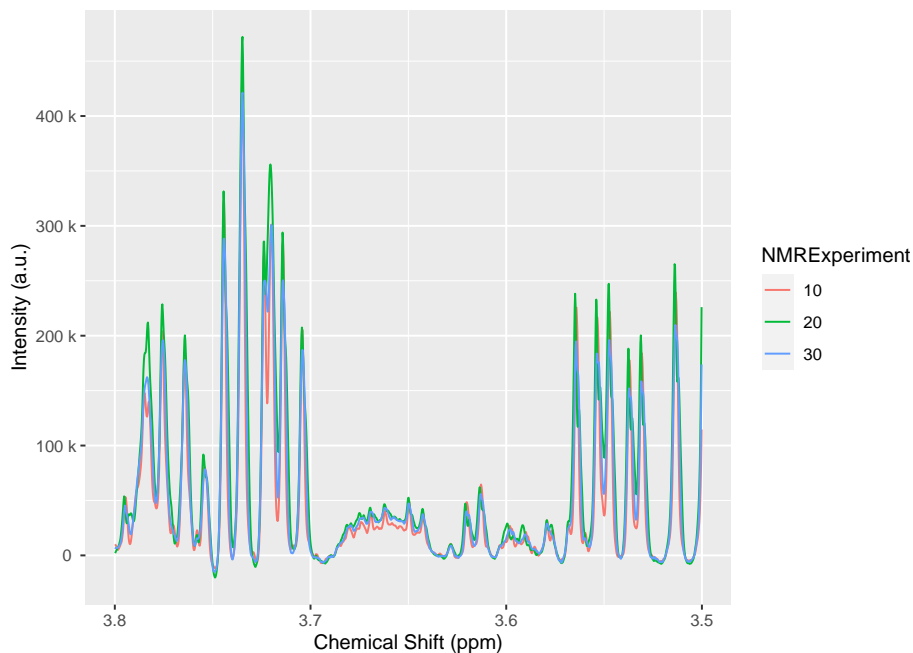
```
plot(dataset, chemshift_range = c(3.5,3.8))
```



Introduction to AlpsNMR (older API)

And after:

```
dataset = nmr_baseline_removal(dataset, lambda = 6, p = 0.01)
plot(dataset, chemshift_range = c(3.5,3.8))
```



11 Peak detection

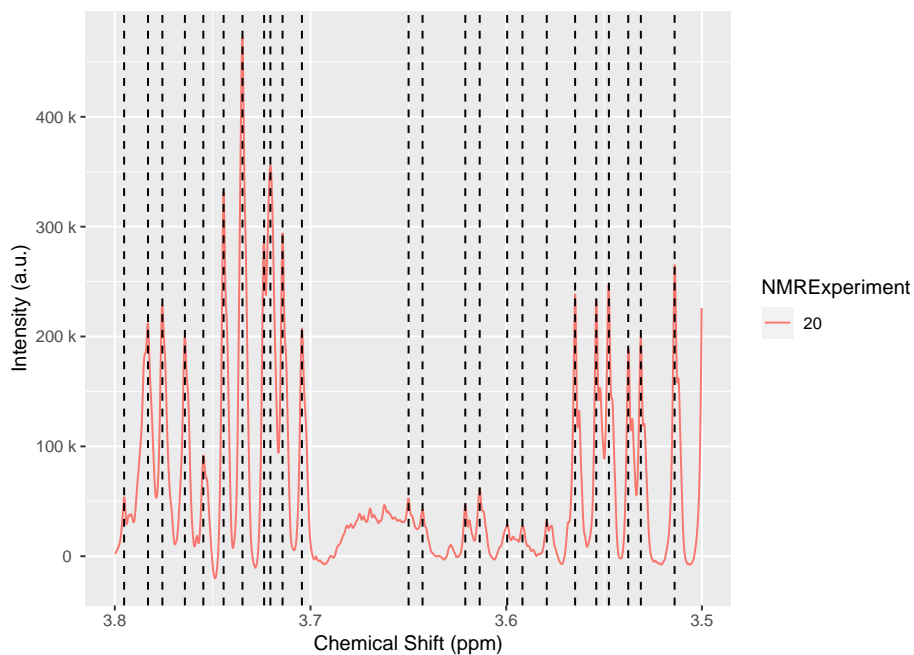
The peak detection is performed on short spectra segments using a continuous wavelet transform. See `?nmr_detect_peaks` for more information.

Our current approach relies on the use of the baseline threshold (`baselineThresh`) automatic calculated (see `?nmr_baseline_threshold`) and the Signal to Noise Threshold (`SNR.Th`) to discriminate valid peaks from noise.

The combination of the `baselineThresh` and the `SNR.Th` optimizes the number of actual peaks from noise.

The advantage of the `SNR.Th` method is that it estimates the noise level on each spectra region independently, so in practice it can be used as a dynamic baseline threshold level.

```
peak_table <- nmr_detect_peaks(dataset,
                              nDivRange_ppm = 0.1,
                              scales = seq(1, 16, 2),
                              baselineThresh = NULL, SNR.Th = 3)
NMRExp_ref <- nmr_align_find_ref(dataset, peak_table)
message("Your reference is NMRExperiment ", NMRExp_ref)
#> Your reference is NMRExperiment 30
nmr_detect_peaks_plot(dataset, peak_table, NMRExperiment = "20", chemshift_range = c(3.5,3.8))
```



12 Spectra alignment

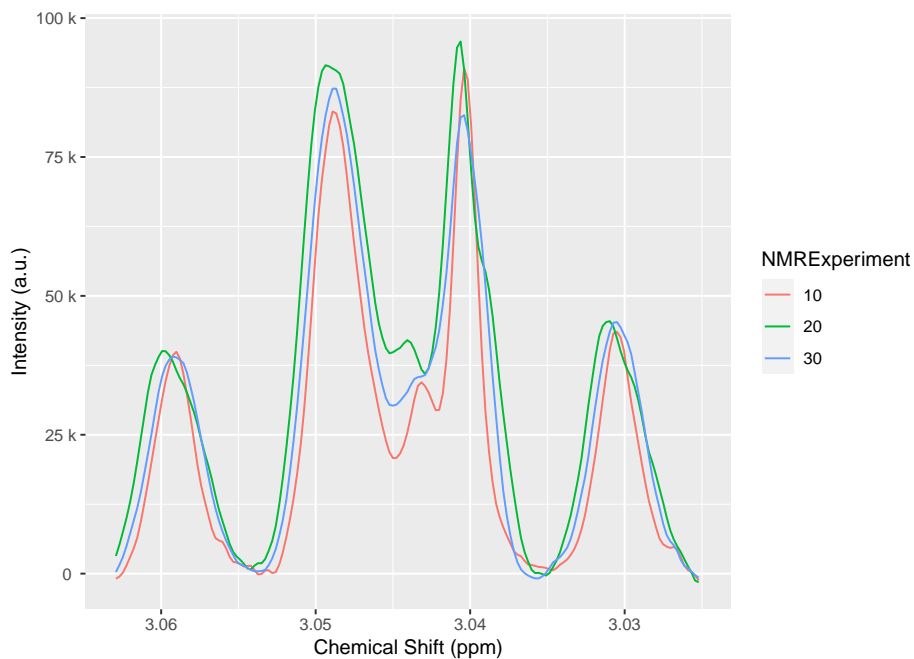
To align the sample, we use the `nmr_align` function, which in turn uses a hierarchical clustering method (see `?nmr_align` for further details).

The `maxShift_ppm` limits the maximum shift allowed for the spectra.

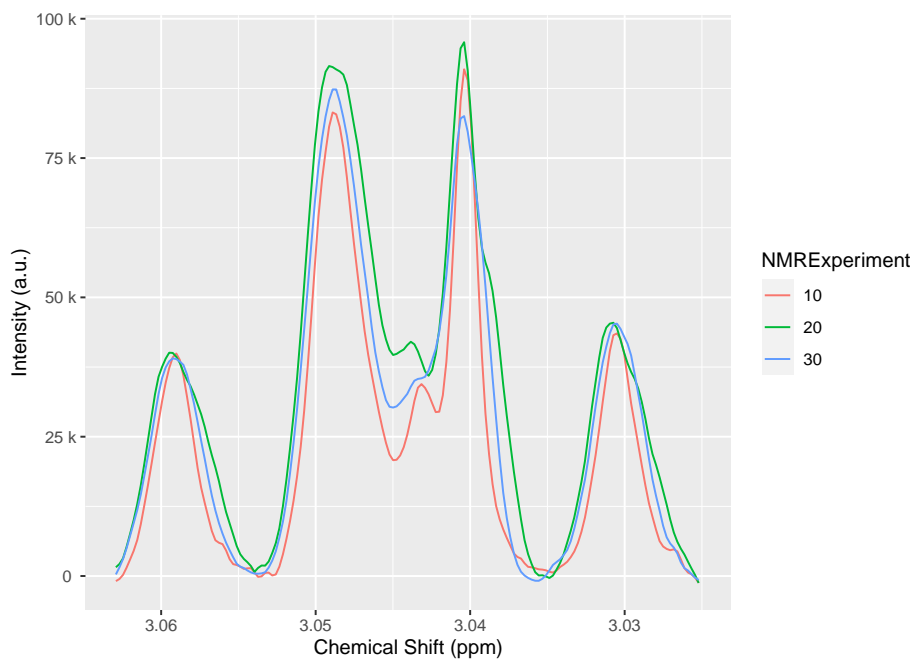
```
nmr_exp_ref <- nmr_align_find_ref(dataset, peak_table)
dataset_align <- nmr_align(dataset, peak_table, nmr_exp_ref, maxShift_ppm = 0.0015, acceptLostPeak = FALSE)
```

```
plot(dataset, chemshift_range = c(3.025, 3.063))
```

Introduction to AlpsNMR (older API)



```
plot(dataset_align, chemshift_range = c(3.025, 3.063))
```



13 Normalization

There are multiple normalization techniques available. The most strongly recommended is the `pqn` normalization, but it may not be fully reliable when the number of samples is small, as it needs a computation of the median spectra. Nevertheless, it is possible to compute it:

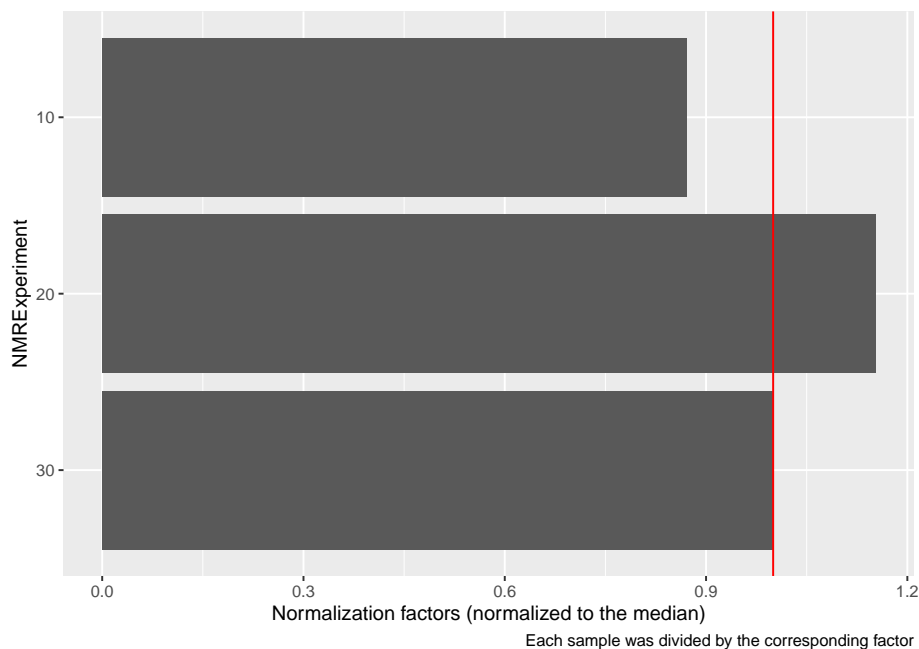
Introduction to AlpsNMR (older API)

```
dataset_norm <- nmr_normalize(dataset_align, method = "pqn")  
#> Warning: There are not enough samples for reliably estimating the median spectra  
#> i The Probabalistic Quotient Normalization requires several samples to compute the median spectra. Your n  
#> i Review your peaks before and after normalization to ensure there are no big distortions
```

The AlpsNMR package offers the possibility to extract additional normalization information with `nmr_normalize_extra_info(dataset)`, to explore the normalization factors applied to each sample:

The plot shows the dispersion with respect to the median of the normalization factors, and can highlight samples with abnormally large or small normalization factors.

```
diagnostic <- nmr_normalize_extra_info(dataset_norm)  
diagnostic$norm_factor  
#> NMRExperiment norm_factor norm_factor_norm  
#> 1 10 0.8706322 0.8706322  
#> 2 20 1.1523450 1.1523450  
#> 3 30 1.0000000 1.0000000  
diagnostic$plot
```



14 Peak integration

14.1 1. Integration based on peak center and width

If we want to integrate the whole spectra, we need ppm from the `peak_table`. See `Peak detection` section. The function `nmr_integrate_peak_positions` generates a new `nmr_dataset_1D` object containing the integrals from the `peak_table` (ppm values corresponding to detected peaks).

Introduction to AlpsNMR (older API)

```
peak_table_integration = nmr_integrate_peak_positions(  
  samples = dataset_norm,  
  peak_pos_ppm = peak_table$ppm,  
  peak_width_ppm = 0.006)  
#> New names:  
#> * `ppm_-0.0002` -> `ppm_-0.0002...6`  
#> * `ppm_0.8607` -> `ppm_0.8607...22`  
#> * `ppm_0.8655` -> `ppm_0.8655...23`  
#> * `ppm_0.8729` -> `ppm_0.8729...24`  
#> * `ppm_0.8784` -> `ppm_0.8784...25`  
#> * `ppm_0.8910` -> `ppm_0.8910...26`  
#> * `ppm_0.9032` -> `ppm_0.9032...27`  
#> * `ppm_0.9085` -> `ppm_0.9085...28`  
#> * `ppm_0.9196` -> `ppm_0.9196...30`  
#> * `ppm_0.9313` -> `ppm_0.9313...31`  
#> * `ppm_0.9437` -> `ppm_0.9437...32`  
#> * `ppm_0.9554` -> `ppm_0.9554...33`  
#> * `ppm_0.9658` -> `ppm_0.9658...34`  
#> * `ppm_0.9902` -> `ppm_0.9902...36`  
#> * `ppm_1.0019` -> `ppm_1.0019...37`  
#> * `ppm_1.0093` -> `ppm_1.0093...38`  
#> * `ppm_1.0208` -> `ppm_1.0208...39`  
#> * `ppm_1.0410` -> `ppm_1.0410...40`  
#> * `ppm_1.0716` -> `ppm_1.0716...43`  
#> * `ppm_1.0803` -> `ppm_1.0803...44`  
#> * `ppm_1.1505` -> `ppm_1.1505...46`  
#> * `ppm_1.1979` -> `ppm_1.1979...47`  
#> * `ppm_1.2084` -> `ppm_1.2084...48`  
#> * `ppm_1.2179` -> `ppm_1.2179...49`  
#> * `ppm_1.3262` -> `ppm_1.3262...54`  
#> * `ppm_1.3377` -> `ppm_1.3377...55`  
#> * `ppm_1.4424` -> `ppm_1.4424...57`  
#> * `ppm_1.4913` -> `ppm_1.4913...59`  
#> * `ppm_1.5693` -> `ppm_1.5693...66`  
#> * `ppm_1.6195` -> `ppm_1.6195...72`  
#> * `ppm_1.6443` -> `ppm_1.6443...75`  
#> * `ppm_1.6562` -> `ppm_1.6562...77`  
#> * `ppm_1.6799` -> `ppm_1.6799...80`  
#> * `ppm_1.6990` -> `ppm_1.6990...86`  
#> * `ppm_1.7351` -> `ppm_1.7351...92`  
#> * `ppm_1.7614` -> `ppm_1.7614...95`  
#> * `ppm_1.8131` -> `ppm_1.8131...97`  
#> * `ppm_1.8748` -> `ppm_1.8748...103`  
#> * `ppm_1.9210` -> `ppm_1.9210...106`  
#> * `ppm_1.9313` -> `ppm_1.9313...107`  
#> * `ppm_2.0026` -> `ppm_2.0026...114`  
#> * `ppm_2.0194` -> `ppm_2.0194...117`  
#> * `ppm_2.0307` -> `ppm_2.0307...118`  
#> * `ppm_2.0422` -> `ppm_2.0422...119`  
#> * `ppm_2.0806` -> `ppm_2.0806...123`  
#> * `ppm_2.1149` -> `ppm_2.1149...126`
```

Introduction to AlpinsNMR (older API)

```
#> * `ppm_2.1192` -> `ppm_2.1192...127`  
#> * `ppm_2.1273` -> `ppm_2.1273...128`  
#> * `ppm_2.1324` -> `ppm_2.1324...129`  
#> * `ppm_2.1572` -> `ppm_2.1572...134`  
#> * `ppm_2.1655` -> `ppm_2.1655...135`  
#> * `ppm_2.2835` -> `ppm_2.2835...143`  
#> * `ppm_2.2950` -> `ppm_2.2950...144`  
#> * `ppm_2.3251` -> `ppm_2.3251...147`  
#> * `ppm_2.3451` -> `ppm_2.3451...149`  
#> * `ppm_2.3513` -> `ppm_2.3513...150`  
#> * `ppm_2.3575` -> `ppm_2.3575...151`  
#> * `ppm_2.3644` -> `ppm_2.3644...152`  
#> * `ppm_2.3711` -> `ppm_2.3711...153`  
#> * `ppm_2.4196` -> `ppm_2.4196...157`  
#> * `ppm_2.4912` -> `ppm_2.4912...166`  
#> * `ppm_2.4953` -> `ppm_2.4953...167`  
#> * `ppm_2.5284` -> `ppm_2.5284...171`  
#> * `ppm_2.6216` -> `ppm_2.6216...177`  
#> * `ppm_2.7577` -> `ppm_2.7577...188`  
#> * `ppm_2.9332` -> `ppm_2.9332...199`  
#> * `ppm_3.0305` -> `ppm_3.0305...206`  
#> * `ppm_3.0404` -> `ppm_3.0404...207`  
#> * `ppm_3.0489` -> `ppm_3.0489...208`  
#> * `ppm_3.2081` -> `ppm_3.2081...218`  
#> * `ppm_3.2154` -> `ppm_3.2154...219`  
#> * `ppm_3.2320` -> `ppm_3.2320...220`  
#> * `ppm_3.2382` -> `ppm_3.2382...221`  
#> * `ppm_3.2672` -> `ppm_3.2672...223`  
#> * `ppm_3.2706` -> `ppm_3.2706...224`  
#> * `ppm_3.4031` -> `ppm_3.4031...228`  
#> * `ppm_3.4243` -> `ppm_3.4243...231`  
#> * `ppm_3.4829` -> `ppm_3.4829...238`  
#> * `ppm_3.4981` -> `ppm_3.4981...240`  
#> * `ppm_3.5135` -> `ppm_3.5135...241`  
#> * `ppm_3.5372` -> `ppm_3.5372...243`  
#> * `ppm_3.7042` -> `ppm_3.7042...254`  
#> * `ppm_3.7141` -> `ppm_3.7141...255`  
#> * `ppm_3.7200` -> `ppm_3.7200...256`  
#> * `ppm_3.7237` -> `ppm_3.7237...257`  
#> * `ppm_3.7348` -> `ppm_3.7348...258`  
#> * `ppm_3.7442` -> `ppm_3.7442...259`  
#> * `ppm_3.7757` -> `ppm_3.7757...262`  
#> * `ppm_3.8233` -> `ppm_3.8233...265`  
#> * `ppm_3.8438` -> `ppm_3.8438...268`  
#> * `ppm_3.8528` -> `ppm_3.8528...270`  
#> * `ppm_3.8886` -> `ppm_3.8886...273`  
#> * `ppm_3.8923` -> `ppm_3.8923...274`  
#> * `ppm_3.9091` -> `ppm_3.9091...275`  
#> * `ppm_3.9128` -> `ppm_3.9128...276`  
#> * `ppm_3.9333` -> `ppm_3.9333...277`  
#> * `ppm_3.9493` -> `ppm_3.9493...278`
```

Introduction to AlpinsMR (older API)

```
#> * `ppm_3.9917` -> `ppm_3.9917...282`  
#> * `ppm_4.0020` -> `ppm_4.0020...283`  
#> * `ppm_4.0108` -> `ppm_4.0108...284`  
#> * `ppm_4.1205` -> `ppm_4.1205...288`  
#> * `ppm_4.1320` -> `ppm_4.1320...289`  
#> * `ppm_4.1927` -> `ppm_4.1927...291`  
#> * `ppm_4.2281` -> `ppm_4.2281...293`  
#> * `ppm_4.2398` -> `ppm_4.2398...295`  
#> * `ppm_4.2566` -> `ppm_4.2566...299`  
#> * `ppm_4.4376` -> `ppm_4.4376...315`  
#> * `ppm_4.4531` -> `ppm_4.4531...317`  
#> * `ppm_4.5218` -> `ppm_4.5218...320`  
#> * `ppm_4.5221` -> `ppm_4.5221...321`  
#> * `ppm_4.5906` -> `ppm_4.5906...324`  
#> * `ppm_4.5991` -> `ppm_4.5991...325`  
#> * `ppm_5.2369` -> `ppm_5.2369...329`  
#> * `ppm_5.4154` -> `ppm_5.4154...336`  
#> * `ppm_6.1026` -> `ppm_6.1026...350`  
#> * `ppm_6.9009` -> `ppm_6.9009...361`  
#> * `ppm_6.9154` -> `ppm_6.9154...362`  
#> * `ppm_7.2894` -> `ppm_7.2894...372`  
#> * `ppm_7.3014` -> `ppm_7.3014...373`  
#> * `ppm_7.3409` -> `ppm_7.3409...376`  
#> * `ppm_7.3816` -> `ppm_7.3816...380`  
#> * `ppm_7.4881` -> `ppm_7.4881...387`  
#> * `ppm_7.5553` -> `ppm_7.5553...390`  
#> * `ppm_8.2458` -> `ppm_8.2458...407`  
#> * `ppm_8.3515` -> `ppm_8.3515...409`  
#> * `ppm_8.4608` -> `ppm_8.4608...411`  
#> * `ppm_-0.0002` -> `ppm_-0.0002...422`  
#> * `ppm_0.8110` -> `ppm_0.8110...438`  
#> * `ppm_0.8552` -> `ppm_0.8552...442`  
#> * `ppm_0.8607` -> `ppm_0.8607...443`  
#> * `ppm_0.8784` -> `ppm_0.8784...446`  
#> * `ppm_0.8910` -> `ppm_0.8910...447`  
#> * `ppm_0.9085` -> `ppm_0.9085...449`  
#> * `ppm_0.9196` -> `ppm_0.9196...450`  
#> * `ppm_0.9313` -> `ppm_0.9313...451`  
#> * `ppm_0.9437` -> `ppm_0.9437...452`  
#> * `ppm_0.9554` -> `ppm_0.9554...453`  
#> * `ppm_0.9658` -> `ppm_0.9658...454`  
#> * `ppm_1.0093` -> `ppm_1.0093...458`  
#> * `ppm_1.0205` -> `ppm_1.0205...459`  
#> * `ppm_1.0716` -> `ppm_1.0716...463`  
#> * `ppm_1.0803` -> `ppm_1.0803...464`  
#> * `ppm_1.1505` -> `ppm_1.1505...468`  
#> * `ppm_1.2084` -> `ppm_1.2084...470`  
#> * `ppm_1.2179` -> `ppm_1.2179...471`  
#> * `ppm_1.2294` -> `ppm_1.2294...472`  
#> * `ppm_1.3262` -> `ppm_1.3262...476`  
#> * `ppm_1.3377` -> `ppm_1.3377...477`
```


Introduction to AlpsNMR (older API)

```
#> * `ppm_1.4308` -> `ppm_1.4308...478`  
#> * `ppm_1.4424` -> `ppm_1.4424...479`  
#> * `ppm_1.4794` -> `ppm_1.4794...480`  
#> * `ppm_1.5693` -> `ppm_1.5693...487`  
#> * `ppm_1.6195` -> `ppm_1.6195...491`  
#> * `ppm_1.6319` -> `ppm_1.6319...492`  
#> * `ppm_1.6441` -> `ppm_1.6441...494`  
#> * `ppm_1.6560` -> `ppm_1.6560...495`  
#> * `ppm_1.6562` -> `ppm_1.6562...496`  
#> * `ppm_1.6675` -> `ppm_1.6675...498`  
#> * `ppm_1.6747` -> `ppm_1.6747...499`  
#> * `ppm_1.6799` -> `ppm_1.6799...501`  
#> * `ppm_1.6990` -> `ppm_1.6990...503`  
#> * `ppm_1.7075` -> `ppm_1.7075...504`  
#> * `ppm_1.7614` -> `ppm_1.7614...511`  
#> * `ppm_1.8752` -> `ppm_1.8752...522`  
#> * `ppm_1.9812` -> `ppm_1.9812...530`  
#> * `ppm_2.0422` -> `ppm_2.0422...537`  
#> * `ppm_2.0923` -> `ppm_2.0923...542`  
#> * `ppm_2.1192` -> `ppm_2.1192...545`  
#> * `ppm_2.1273` -> `ppm_2.1273...546`  
#> * `ppm_2.1324` -> `ppm_2.1324...547`  
#> * `ppm_2.1572` -> `ppm_2.1572...550`  
#> * `ppm_2.1655` -> `ppm_2.1655...551`  
#> * `ppm_2.2515` -> `ppm_2.2515...558`  
#> * `ppm_2.2717` -> `ppm_2.2717...561`  
#> * `ppm_2.3451` -> `ppm_2.3451...570`  
#> * `ppm_2.3513` -> `ppm_2.3513...571`  
#> * `ppm_2.3575` -> `ppm_2.3575...572`  
#> * `ppm_2.3644` -> `ppm_2.3644...573`  
#> * `ppm_2.4063` -> `ppm_2.4063...577`  
#> * `ppm_2.4196` -> `ppm_2.4196...578`  
#> * `ppm_2.4456` -> `ppm_2.4456...581`  
#> * `ppm_2.4953` -> `ppm_2.4953...586`  
#> * `ppm_2.5284` -> `ppm_2.5284...590`  
#> * `ppm_2.7994` -> `ppm_2.7994...606`  
#> * `ppm_2.9339` -> `ppm_2.9339...615`  
#> * `ppm_3.2154` -> `ppm_3.2154...638`  
#> * `ppm_3.2706` -> `ppm_3.2706...643`  
#> * `ppm_3.3930` -> `ppm_3.3930...646`  
#> * `ppm_3.4185` -> `ppm_3.4185...648`  
#> * `ppm_3.5793` -> `ppm_3.5793...663`  
#> * `ppm_3.6428` -> `ppm_3.6428...668`  
#> * `ppm_3.6499` -> `ppm_3.6499...669`  
#> * `ppm_3.7237` -> `ppm_3.7237...673`  
#> * `ppm_3.7348` -> `ppm_3.7348...674`  
#> * `ppm_3.7642` -> `ppm_3.7642...677`  
#> * `ppm_3.7757` -> `ppm_3.7757...678`  
#> * `ppm_3.8438` -> `ppm_3.8438...683`  
#> * `ppm_3.8923` -> `ppm_3.8923...689`  
#> * `ppm_3.9128` -> `ppm_3.9128...691`
```

Introduction to AlpinsMR (older API)

```
#> * `ppm_3.9917` -> `ppm_3.9917...698`  
#> * `ppm_4.0020` -> `ppm_4.0020...699`  
#> * `ppm_4.2281` -> `ppm_4.2281...712`  
#> * `ppm_4.2398` -> `ppm_4.2398...714`  
#> * `ppm_4.2566` -> `ppm_4.2566...717`  
#> * `ppm_4.5089` -> `ppm_4.5089...735`  
#> * `ppm_4.5092` -> `ppm_4.5092...736`  
#> * `ppm_4.5221` -> `ppm_4.5221...737`  
#> * `ppm_4.5991` -> `ppm_4.5991...742`  
#> * `ppm_5.0973` -> `ppm_5.0973...744`  
#> * `ppm_5.4154` -> `ppm_5.4154...753`  
#> * `ppm_5.4220` -> `ppm_5.4220...754`  
#> * `ppm_6.1026` -> `ppm_6.1026...771`  
#> * `ppm_6.9154` -> `ppm_6.9154...790`  
#> * `ppm_6.9626` -> `ppm_6.9626...791`  
#> * `ppm_7.2066` -> `ppm_7.2066...798`  
#> * `ppm_7.3014` -> `ppm_7.3014...803`  
#> * `ppm_7.3409` -> `ppm_7.3409...806`  
#> * `ppm_7.4881` -> `ppm_7.4881...816`  
#> * `ppm_7.5415` -> `ppm_7.5415...819`  
#> * `ppm_8.2458` -> `ppm_8.2458...839`  
#> * `ppm_8.4608` -> `ppm_8.4608...842`  
#> * `ppm_-0.0002` -> `ppm_-0.0002...853`  
#> * `ppm_0.8110` -> `ppm_0.8110...865`  
#> * `ppm_0.8552` -> `ppm_0.8552...869`  
#> * `ppm_0.8655` -> `ppm_0.8655...871`  
#> * `ppm_0.8729` -> `ppm_0.8729...872`  
#> * `ppm_0.9032` -> `ppm_0.9032...875`  
#> * `ppm_0.9085` -> `ppm_0.9085...876`  
#> * `ppm_0.9196` -> `ppm_0.9196...877`  
#> * `ppm_0.9313` -> `ppm_0.9313...878`  
#> * `ppm_0.9902` -> `ppm_0.9902...883`  
#> * `ppm_1.0019` -> `ppm_1.0019...884`  
#> * `ppm_1.0205` -> `ppm_1.0205...886`  
#> * `ppm_1.0208` -> `ppm_1.0208...887`  
#> * `ppm_1.0410` -> `ppm_1.0410...888`  
#> * `ppm_1.0716` -> `ppm_1.0716...891`  
#> * `ppm_1.0803` -> `ppm_1.0803...892`  
#> * `ppm_1.1505` -> `ppm_1.1505...896`  
#> * `ppm_1.1979` -> `ppm_1.1979...897`  
#> * `ppm_1.2084` -> `ppm_1.2084...898`  
#> * `ppm_1.2179` -> `ppm_1.2179...899`  
#> * `ppm_1.2294` -> `ppm_1.2294...900`  
#> * `ppm_1.3262` -> `ppm_1.3262...904`  
#> * `ppm_1.3377` -> `ppm_1.3377...905`  
#> * `ppm_1.4308` -> `ppm_1.4308...906`  
#> * `ppm_1.4424` -> `ppm_1.4424...907`  
#> * `ppm_1.4794` -> `ppm_1.4794...908`  
#> * `ppm_1.4913` -> `ppm_1.4913...909`  
#> * `ppm_1.6319` -> `ppm_1.6319...919`  
#> * `ppm_1.6441` -> `ppm_1.6441...920`
```

Introduction to AlpsNMR (older API)

```
#> * `ppm_1.6443` -> `ppm_1.6443...921`  
#> * `ppm_1.6560` -> `ppm_1.6560...922`  
#> * `ppm_1.6562` -> `ppm_1.6562...923`  
#> * `ppm_1.6675` -> `ppm_1.6675...924`  
#> * `ppm_1.6747` -> `ppm_1.6747...925`  
#> * `ppm_1.6799` -> `ppm_1.6799...927`  
#> * `ppm_1.6990` -> `ppm_1.6990...930`  
#> * `ppm_1.7075` -> `ppm_1.7075...933`  
#> * `ppm_1.7351` -> `ppm_1.7351...937`  
#> * `ppm_1.7614` -> `ppm_1.7614...940`  
#> * `ppm_1.8131` -> `ppm_1.8131...945`  
#> * `ppm_1.8748` -> `ppm_1.8748...952`  
#> * `ppm_1.8752` -> `ppm_1.8752...953`  
#> * `ppm_1.9210` -> `ppm_1.9210...956`  
#> * `ppm_1.9313` -> `ppm_1.9313...957`  
#> * `ppm_1.9812` -> `ppm_1.9812...962`  
#> * `ppm_2.0026` -> `ppm_2.0026...964`  
#> * `ppm_2.0194` -> `ppm_2.0194...967`  
#> * `ppm_2.0307` -> `ppm_2.0307...968`  
#> * `ppm_2.0806` -> `ppm_2.0806...974`  
#> * `ppm_2.0923` -> `ppm_2.0923...975`  
#> * `ppm_2.1149` -> `ppm_2.1149...977`  
#> * `ppm_2.1192` -> `ppm_2.1192...978`  
#> * `ppm_2.1273` -> `ppm_2.1273...979`  
#> * `ppm_2.2515` -> `ppm_2.2515...992`  
#> * `ppm_2.2717` -> `ppm_2.2717...995`  
#> * `ppm_2.2835` -> `ppm_2.2835...997`  
#> * `ppm_2.2950` -> `ppm_2.2950...999`  
#> * `ppm_2.3251` -> `ppm_2.3251...1002`  
#> * `ppm_2.3513` -> `ppm_2.3513...1005`  
#> * `ppm_2.3575` -> `ppm_2.3575...1006`  
#> * `ppm_2.3711` -> `ppm_2.3711...1008`  
#> * `ppm_2.4063` -> `ppm_2.4063...1011`  
#> * `ppm_2.4196` -> `ppm_2.4196...1012`  
#> * `ppm_2.4456` -> `ppm_2.4456...1015`  
#> * `ppm_2.4912` -> `ppm_2.4912...1020`  
#> * `ppm_2.6216` -> `ppm_2.6216...1029`  
#> * `ppm_2.7577` -> `ppm_2.7577...1039`  
#> * `ppm_2.7994` -> `ppm_2.7994...1041`  
#> * `ppm_2.9332` -> `ppm_2.9332...1050`  
#> * `ppm_2.9339` -> `ppm_2.9339...1051`  
#> * `ppm_3.0305` -> `ppm_3.0305...1058`  
#> * `ppm_3.0404` -> `ppm_3.0404...1059`  
#> * `ppm_3.0489` -> `ppm_3.0489...1060`  
#> * `ppm_3.2081` -> `ppm_3.2081...1070`  
#> * `ppm_3.2320` -> `ppm_3.2320...1072`  
#> * `ppm_3.2382` -> `ppm_3.2382...1073`  
#> * `ppm_3.2672` -> `ppm_3.2672...1075`  
#> * `ppm_3.3930` -> `ppm_3.3930...1079`  
#> * `ppm_3.4031` -> `ppm_3.4031...1080`  
#> * `ppm_3.4185` -> `ppm_3.4185...1082`
```

Introduction to AlpsNMR (older API)

```
#> * `ppm_3.4243` -> `ppm_3.4243...1083`  
#> * `ppm_3.4829` -> `ppm_3.4829...1090`  
#> * `ppm_3.4981` -> `ppm_3.4981...1092`  
#> * `ppm_3.5135` -> `ppm_3.5135...1093`  
#> * `ppm_3.5372` -> `ppm_3.5372...1095`  
#> * `ppm_3.5793` -> `ppm_3.5793...1099`  
#> * `ppm_3.6428` -> `ppm_3.6428...1104`  
#> * `ppm_3.6499` -> `ppm_3.6499...1105`  
#> * `ppm_3.7042` -> `ppm_3.7042...1106`  
#> * `ppm_3.7141` -> `ppm_3.7141...1107`  
#> * `ppm_3.7200` -> `ppm_3.7200...1108`  
#> * `ppm_3.7348` -> `ppm_3.7348...1110`  
#> * `ppm_3.7442` -> `ppm_3.7442...1111`  
#> * `ppm_3.7642` -> `ppm_3.7642...1113`  
#> * `ppm_3.8233` -> `ppm_3.8233...1117`  
#> * `ppm_3.8528` -> `ppm_3.8528...1121`  
#> * `ppm_3.8886` -> `ppm_3.8886...1124`  
#> * `ppm_3.9091` -> `ppm_3.9091...1126`  
#> * `ppm_3.9333` -> `ppm_3.9333...1128`  
#> * `ppm_3.9493` -> `ppm_3.9493...1129`  
#> * `ppm_4.0108` -> `ppm_4.0108...1136`  
#> * `ppm_4.1205` -> `ppm_4.1205...1141`  
#> * `ppm_4.1320` -> `ppm_4.1320...1142`  
#> * `ppm_4.1927` -> `ppm_4.1927...1145`  
#> * `ppm_4.2281` -> `ppm_4.2281...1148`  
#> * `ppm_4.2566` -> `ppm_4.2566...1154`  
#> * `ppm_4.4376` -> `ppm_4.4376...1166`  
#> * `ppm_4.4531` -> `ppm_4.4531...1168`  
#> * `ppm_4.5089` -> `ppm_4.5089...1171`  
#> * `ppm_4.5092` -> `ppm_4.5092...1172`  
#> * `ppm_4.5218` -> `ppm_4.5218...1173`  
#> * `ppm_4.5906` -> `ppm_4.5906...1178`  
#> * `ppm_5.0973` -> `ppm_5.0973...1184`  
#> * `ppm_5.2369` -> `ppm_5.2369...1187`  
#> * `ppm_5.4220` -> `ppm_5.4220...1195`  
#> * `ppm_6.9009` -> `ppm_6.9009...1225`  
#> * `ppm_6.9154` -> `ppm_6.9154...1226`  
#> * `ppm_6.9626` -> `ppm_6.9626...1227`  
#> * `ppm_7.2066` -> `ppm_7.2066...1234`  
#> * `ppm_7.2894` -> `ppm_7.2894...1237`  
#> * `ppm_7.3409` -> `ppm_7.3409...1241`  
#> * `ppm_7.3816` -> `ppm_7.3816...1243`  
#> * `ppm_7.5415` -> `ppm_7.5415...1250`  
#> * `ppm_7.5553` -> `ppm_7.5553...1251`  
#> * `ppm_8.3515` -> `ppm_8.3515...1273`  
#> * `ppm_8.4608` -> `ppm_8.4608...1274`
```

```
peak_table_integration = get\_integration\_with\_metadata(peak_table_integration)
```

We can also integrate with a specific peak position and some arbitrary width:

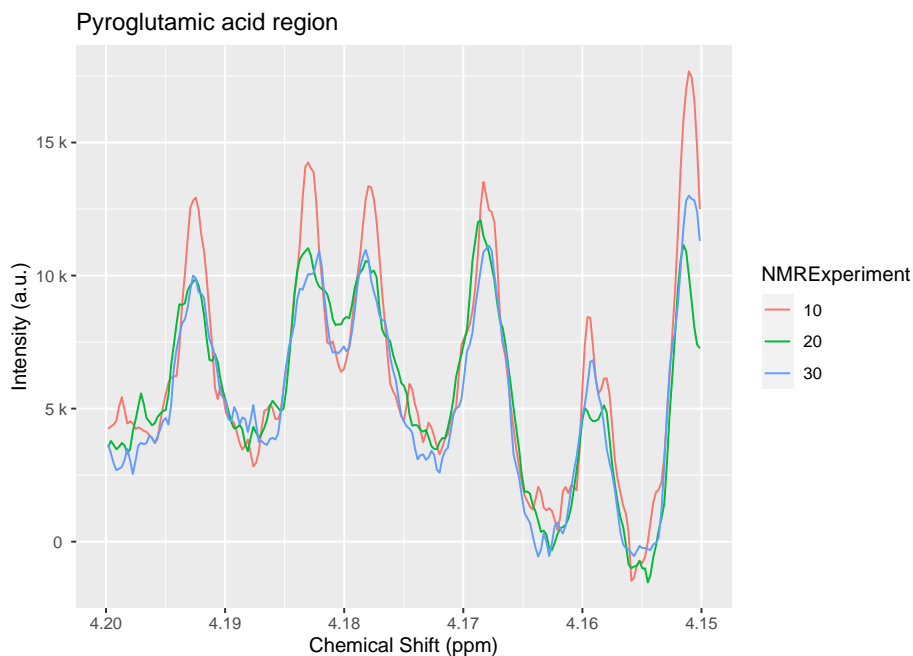
Introduction to AlpsNMR (older API)

```
nmr_data(  
  nmr_integrate_peak_positions(samples = dataset_norm,  
                               peak_pos_ppm = c(4.1925, 4.183, 4.1775, 4.17),  
                               peak_width_ppm = 0.006)  
)  
#>   ppm_4.1925 ppm_4.1830 ppm_4.1775 ppm_4.1700  
#> 10  47.88901  53.53241  50.49386  45.62978  
#> 20  44.18572  51.07377  49.52798  44.53178  
#> 30  42.39196  47.99196  46.34812  39.07835
```

14.2 2. Integration based on peak boundaries

Imagine we only want to integrate the four peaks corresponding to the pyroglutamic acid:

```
pyroglutamic_acid_region <- c(4.15, 4.20)  
plot(dataset_norm, chemshift_range = pyroglutamic_acid_region) +  
  ggplot2::ggtitle("Pyroglutamic acid region")
```



We define the peak regions and integrate them. Note how we can correct the baseline or not. If we correct the baseline, the limits of the integration will be connected with a straight line and that line will be used as the baseline, that will be subtracted.

```
pyroglutamic_acid <- list(pyroglutamic_acid1 = c(4.19, 4.195),  
                          pyroglutamic_acid2 = c(4.18, 4.186),  
                          pyroglutamic_acid3 = c(4.175, 4.18),  
                          pyroglutamic_acid4 = c(4.165, 4.172))  
regions_basecorr_ds <- nmr_integrate_regions(dataset_norm, pyroglutamic_acid, fix_baseline = TRUE)  
regions_basecorr_matrix <- nmr_data(regions_basecorr_ds)  
regions_basecorr_matrix  
#>   pyroglutamic_acid1 pyroglutamic_acid2 pyroglutamic_acid3 pyroglutamic_acid4
```

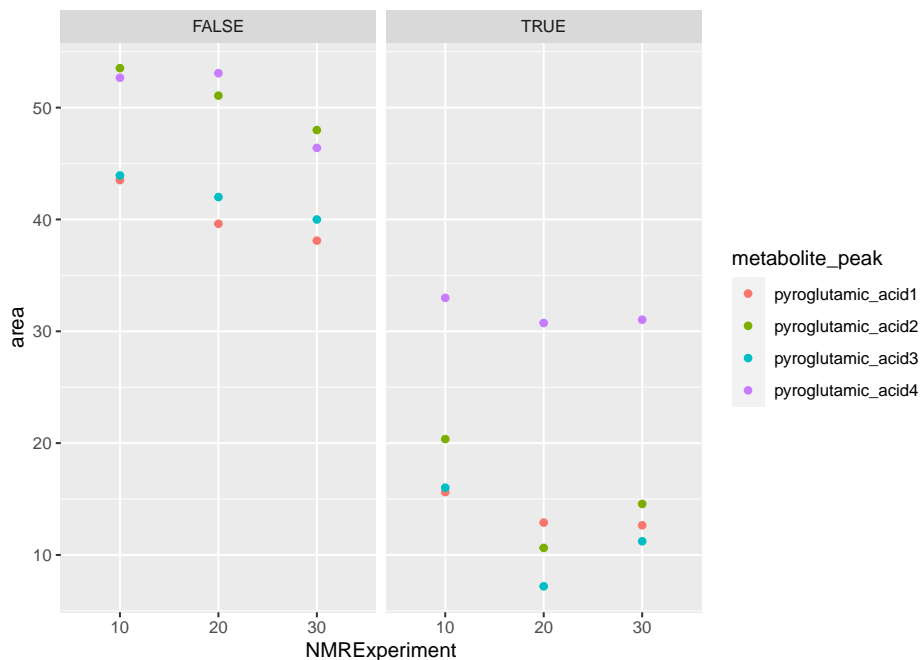
Introduction to AlpsNMR (older API)

```
#> 10      15.61810      20.36002      16.018972      32.99148
#> 20      12.89344      10.63232      7.196728      30.74094
#> 30      12.65231      14.56388      11.226573      31.03655

regions_basel_not_corr_ds <- nmr_integrate_regions(dataset_norm, pyroglutamic_acid, fix_baseline = FALSE)
regions_basel_not_corr_matrix <- nmr_data(regions_basel_not_corr_ds)
regions_basel_not_corr_matrix
#>   pyroglutamic_acid1 pyroglutamic_acid2 pyroglutamic_acid3 pyroglutamic_acid4
#> 10      43.51763      53.53241      43.93533      52.67311
#> 20      39.61702      51.07377      42.00336      53.07528
#> 30      38.10972      47.99196      39.99623      46.40013
```

We may plot the integral values to explore variation based on the baseline subtraction.

```
dplyr::bind_rows(
  regions_basel_corr_matrix %>%
    as.data.frame() %>%
    tibble::rownames_to_column("NMRExperiment") %>%
    tidyr::gather("metabolite_peak", "area", -NMRExperiment) %>%
    dplyr::mutate(BaselineCorrected = TRUE),
  regions_basel_not_corr_matrix %>%
    as.data.frame() %>%
    tibble::rownames_to_column("NMRExperiment") %>%
    tidyr::gather("metabolite_peak", "area", -NMRExperiment) %>%
    dplyr::mutate(BaselineCorrected = FALSE)
) %>% ggplot() + geom_point(aes(x = NMRExperiment, y = area, color = metabolite_peak)) +
  facet_wrap(~BaselineCorrected)
```



15 Identification

After applying any feature selection or machine learning, Alps allows the identification of features of interest through `nmr_identify_regions_blood`. The function gives 3 possibilities sorted by the most probable metabolite (see `nmr_identify_regions_blood` for details).

```
ppm_to_assign <- c(4.060960203, 3.048970634, 2.405935596, 0.990616851, 0.986520147, 1.044258467)
identification <- nmr_identify_regions_blood (ppm_to_assign)
identification[!is.na(identification$Metabolite), ]
#>
#>           Metabolite HMDB_code Shift_ppm Type  J_Hz Height
#> 1781             L-Valine HMDB00883   0.991   d   7.01 1.0000
#> 1031 L-Alpha-aminobutyric acid HMDB00452   0.997   t   7.58 1.0000
#> 178             L-Valine HMDB00883   0.991   d   7.01 1.0000
#> 103  L-Alpha-aminobutyric acid HMDB00452   0.997   t   7.58 1.0000
#> 179             L-Valine HMDB00883   1.044   d   7.05 0.9614
#> 195           Pyroglutamic acid HMDB00267   2.405   m     0.7466
#> 201           Succinic acid HMDB00254   2.405   s     1.0000
#> 148             L-Lysine HMDB00182   3.035   t     1.0000
#> 47             Creatinine HMDB00562   3.045   s     1.0000
#> 44             Creatine HMDB00064   3.035   s     1.0000
#> 46             Creatinine HMDB00562   4.065   s     0.4374
#> 182           Myoinositol HMDB00211   4.068   t  2.839     NA
#> 40             Choline HMDB00097   4.071  ddd     0.0607
#>
#> Blood_concentration n_reported_in_Blood ppm_to_assign
#> 1781           179.04615             13   0.9865201
#> 1031           22.80000              6   0.9865201
#> 178           179.04615             13   0.9906169
#> 103           22.80000              6   0.9906169
#> 179           179.04615             13   1.0442585
#> 195           19.50000              2   2.4059356
#> 201           16.10000              8   2.4059356
#> 148           168.20000             14   3.0489706
#> 47            51.25167             14   3.0489706
#> 44            48.47000              6   3.0489706
#> 46            51.25167             14   4.0609602
#> 182           23.52500              5   4.0609602
#> 40            13.08000              5   4.0609602
```

16 Final thoughts

This vignette shows many of the features of the package, some features have room for improvement, others are not fully described, and the reader will need to browse the documentation. Hopefully it is a good starting point for using the package.

```
sessionInfo()
#> R version 4.2.2 (2022-10-31)
#> Platform: x86_64-pc-linux-gnu (64-bit)
#> Running under: Ubuntu 20.04.5 LTS
#>
#> Matrix products: default
```

Introduction to AlpsNMR (older API)

```
#> BLAS: /home/biocbuild/bbs-3.16-bioc/R/lib/libRblas.so
#> LAPACK: /home/biocbuild/bbs-3.16-bioc/R/lib/libRlapack.so
#>
#> locale:
#> [1] LC_CTYPE=en_US.UTF-8      LC_NUMERIC=C
#> [3] LC_TIME=en_GB              LC_COLLATE=C
#> [5] LC_MONETARY=en_US.UTF-8    LC_MESSAGES=en_US.UTF-8
#> [7] LC_PAPER=en_US.UTF-8      LC_NAME=C
#> [9] LC_ADDRESS=C               LC_TELEPHONE=C
#> [11] LC_MEASUREMENT=en_US.UTF-8 LC_IDENTIFICATION=C
#>
#> attached base packages:
#> [1] stats      graphics  grDevices  utils      datasets  methods  base
#>
#> other attached packages:
#> [1] AlpsNMR_4.0.4      future_1.31.0      BiocParallel_1.32.5
#> [4] readxl_1.4.2       ggplot2_3.4.1      dplyr_1.1.0
#> [7] BiocStyle_2.26.0
#>
#> loaded via a namespace (and not attached):
#> [1] matrixStats_0.63.0  fs_1.6.1           httr_1.4.4
#> [4] RColorBrewer_1.1-3  tools_4.2.2        doRNG_1.8.6
#> [7] utf8_1.2.3          R6_2.5.1           colorspace_2.1-0
#> [10] withr_2.5.0         tidyselect_1.2.0   gridExtra_2.3
#> [13] compiler_4.2.2      MassSpecWavelet_1.64.1 progressr_0.13.0
#> [16] rvest_1.0.3         cli_3.6.0          SparseM_1.81
#> [19] xml2_1.3.3          labeling_0.4.2     bookdown_0.32
#> [22] scales_1.2.1        mvtnorm_1.1-3      randomForest_4.7-1.1
#> [25] quadprog_1.5-8      stringr_1.5.0      digest_0.6.31
#> [28] rmarkdown_2.20      pkgconfig_2.0.3    htmltools_0.5.4
#> [31] parallelly_1.34.0  fastmap_1.1.0      intertools_0.1-3
#> [34] rlang_1.0.6         impute_1.72.3      farver_2.1.1
#> [37] generics_0.1.3     speaq_2.7.0        magrittr_2.0.3
#> [40] Matrix_1.5-3       Rcpp_1.0.10        munsell_0.5.0
#> [43] fansi_1.0.4         lifecycle_1.0.3    RcppZigurat_0.1.6
#> [46] stringi_1.7.12     yaml_2.3.7         MASS_7.3-58.2
#> [49] plyr_1.8.8          grid_4.2.2         parallel_4.2.2
#> [52] listenv_0.9.0       ggrepel_0.9.3      crayon_1.5.2
#> [55] doSNOW_1.0.20      lattice_0.20-45    cowplot_1.1.1
#> [58] knitr_1.42          pillar_1.8.1       igraph_1.4.0
#> [61] rngtools_1.5.2     corpcor_1.6.10     reshape2_1.4.4
#> [64] codetools_0.2-19   mixOmics_6.22.0    lpSolve_5.6.18
#> [67] glue_1.6.2         evaluate_0.20      data.table_1.14.6
#> [70] BiocManager_1.30.19 vctrs_0.5.2        missForest_1.5
#> [73] foreach_1.5.2      cellranger_1.1.0   gtable_0.3.1
#> [76] purrr_1.0.1        tidyr_1.3.0        xfun_0.37
#> [79] limSolve_1.5.6     Rfast_2.0.7        RSpectra_0.16-1
#> [82] baseline_1.3-4     pcaPP_2.0-3        rARPACK_0.11-0
#> [85] signal_0.7-7       tibble_3.1.8       snow_0.4-4
#> [88] iterators_1.0.14   tinytex_0.44       ellipse_0.4.3
#> [91] cluster_2.1.4      globals_0.16.2
```